

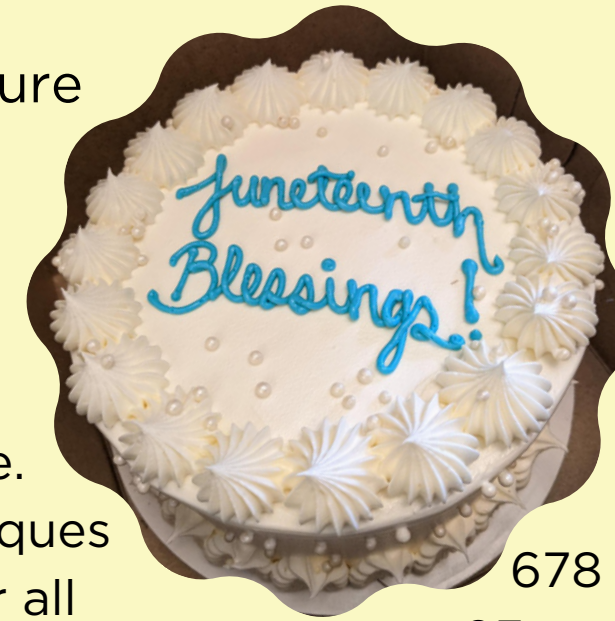


AUTHENTIC CREATIONS ARTISTIC APOTHECARY

Programs Report | Winter 2021-2022 Fall

Affirming the societal greatness of genderqueer People Of Culture

Community Impact



- 6 Incarcerated pen pals
- 67 Mutual aid care packs
- 17 Cash stipends
- Coaching 3 people and 4 organizations
- 51 pounds of Seeds
- 938 ounces of hygiene
- 678 ounces of herbal medicine
- 93 pounds of foods and supplies

Who We Serve

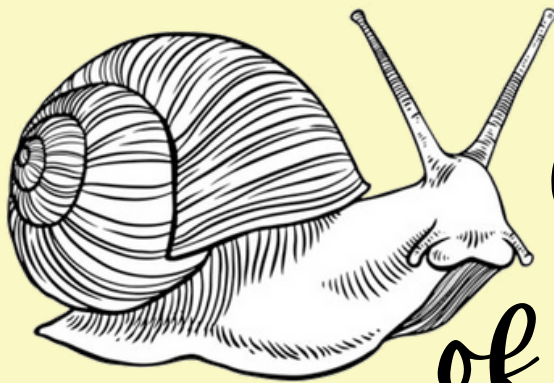
1,463 People Of Culture of which:

- 48% Indigenous
- 27% seniors
- 19% students
- 13% African
- 8% parents

*intersectional community percentages do not equal 100%

Strategic Plan

- Direct action to protect and sustain social change.
- Teach and use interdependent land-based techniques
- Build alternative systems to achieve liberation for all
- Tend the soul wounds of intergenerational trauma.
- Nourish and build up future leaders



Cost of Care

28\$ per community member.

We made a successful effort to pay all our staff livable stipends for 100% of their labour, give 12% of stipend (earnings) in wellness funds, and offer a Leadership Summit focused on wellness, rest, relationship building and ease. With an increase of 4\$ per person we stabilized our trans leadership team for longevity.

Programs

- Liberation Coaching
- Big Mountain Gardening Network
- Incarcerated + Shut-In Pen Pals
- Nia Solidarity Stipends
- African Heritage Garden
- Leadership Summit
- Advisory Council



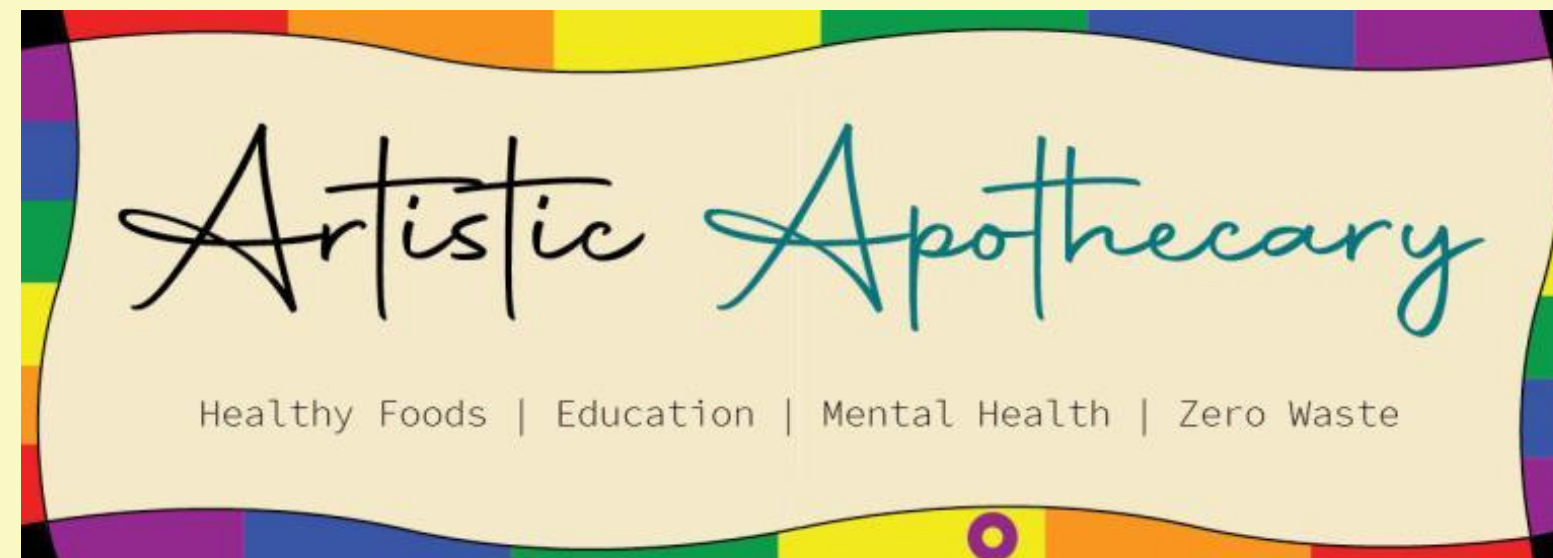
Advisory Council

Mayo Buenafe-Ze
Janeé Harris
Syon Davis



Ethics

BY US, FOR US
Zero Waste Ethos
Liberation For All
Rest and Play
Accountability



JOIN - VOLUNTEER - GIVE

ArtisticApothecary.org
Shop.ArtisticApothecary.org
patreon.com/AuthenticCreations
youtube.com/@ArtisticApothecary